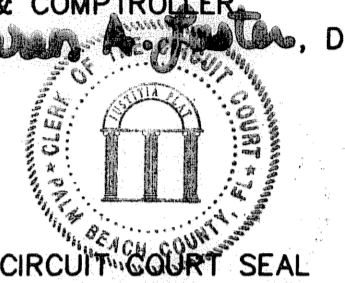


STATE OF FLORIDA
 COUNTY OF PALM BEACH

THIS PLAT WAS FILED FOR RECORD
 THIS 11th DAY OF January
 AD, 2005 AND DULY RECORDED
 IN PLAT BOOK 104 ON PAGES
 89-109

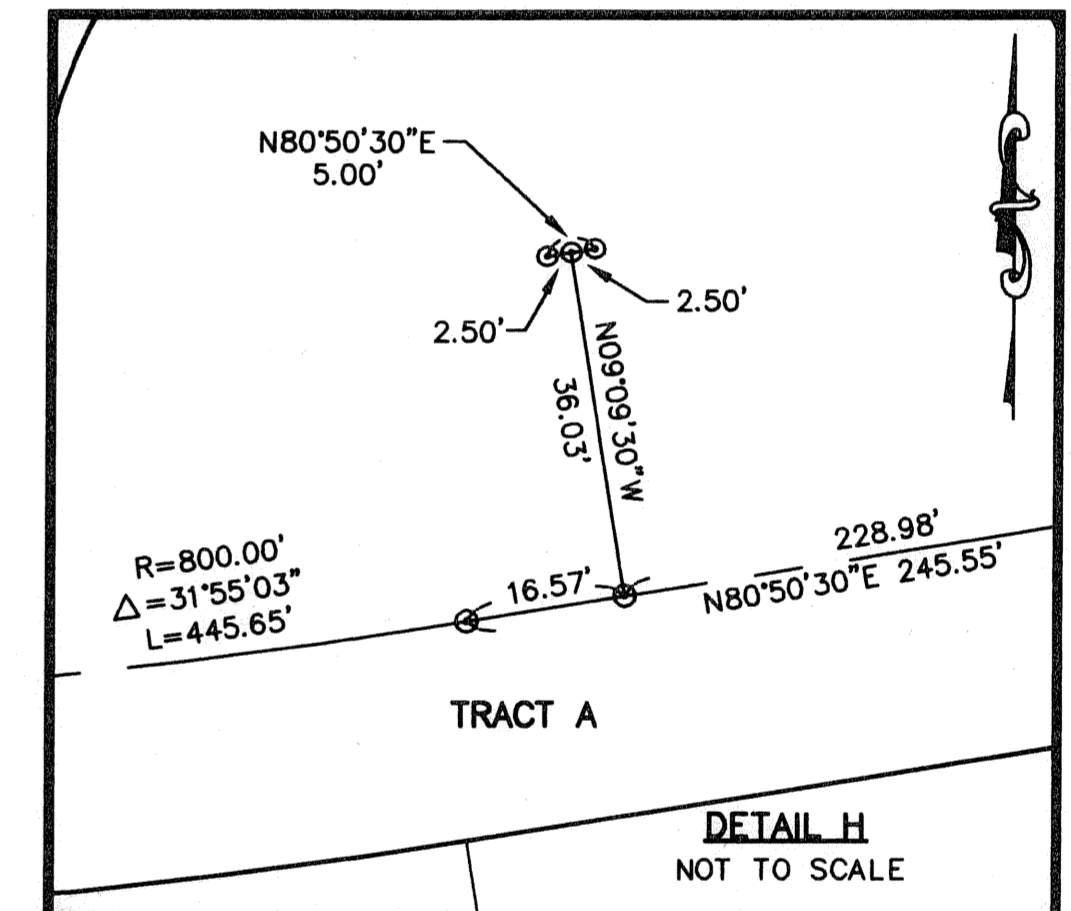
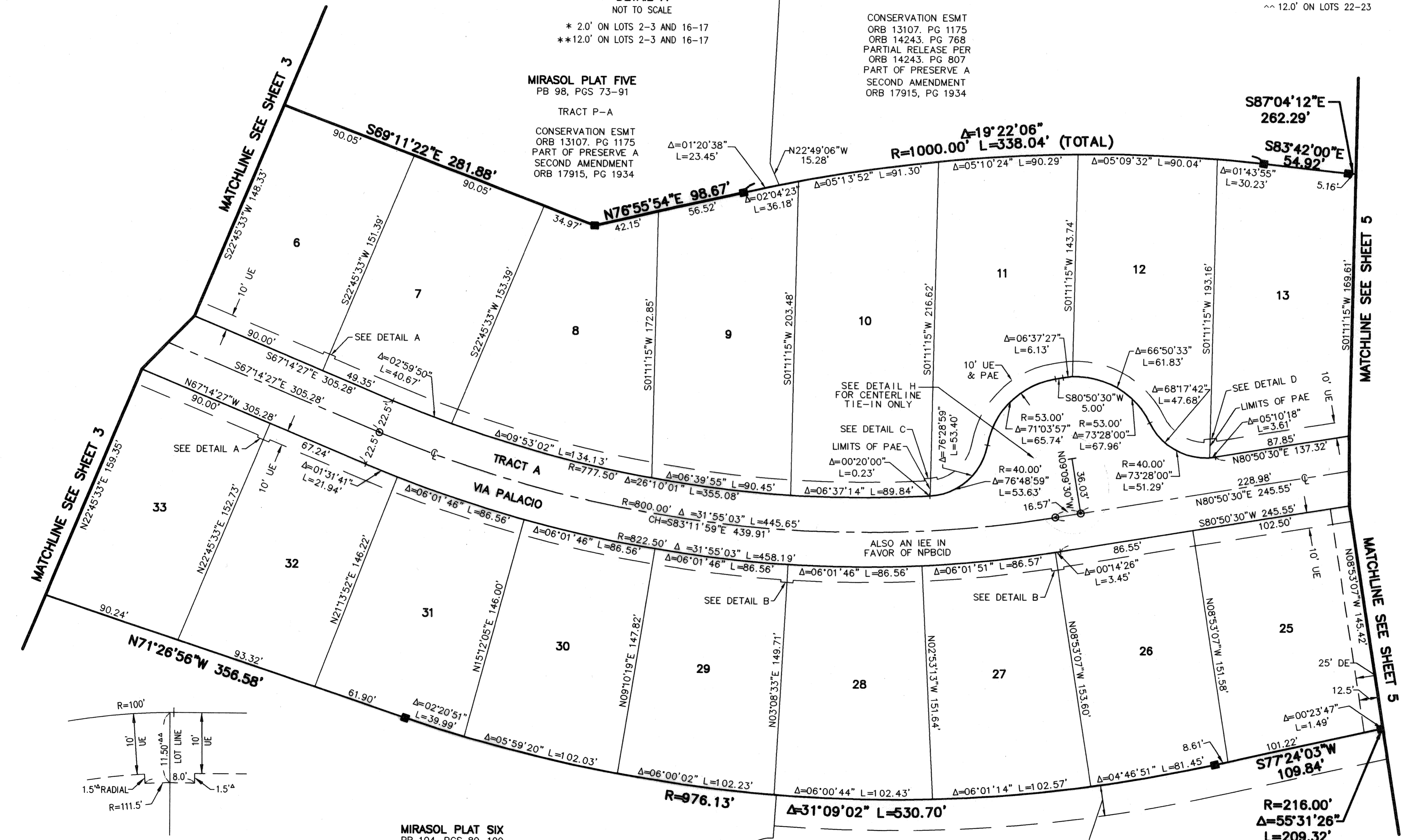
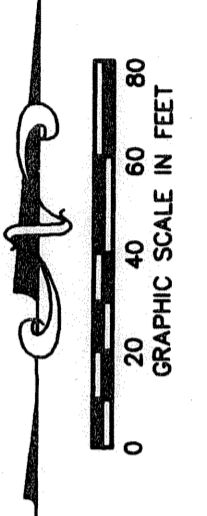
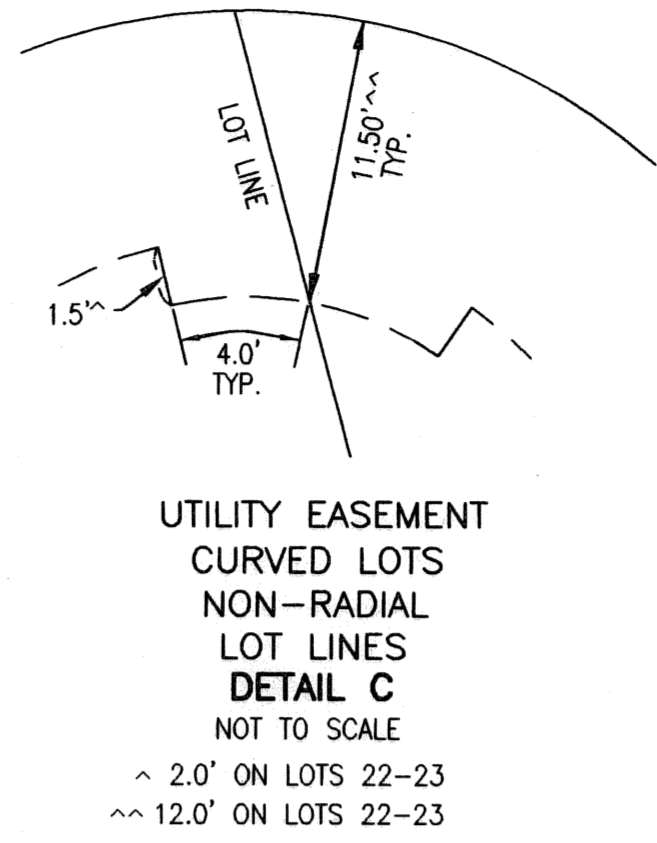
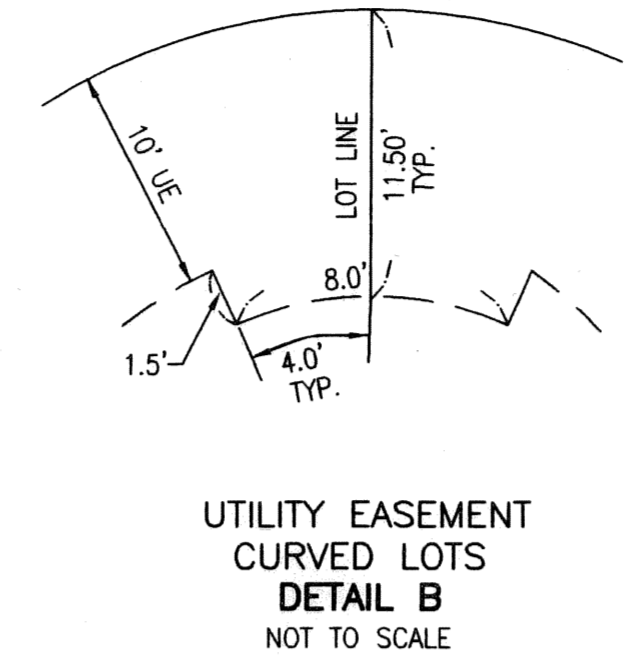
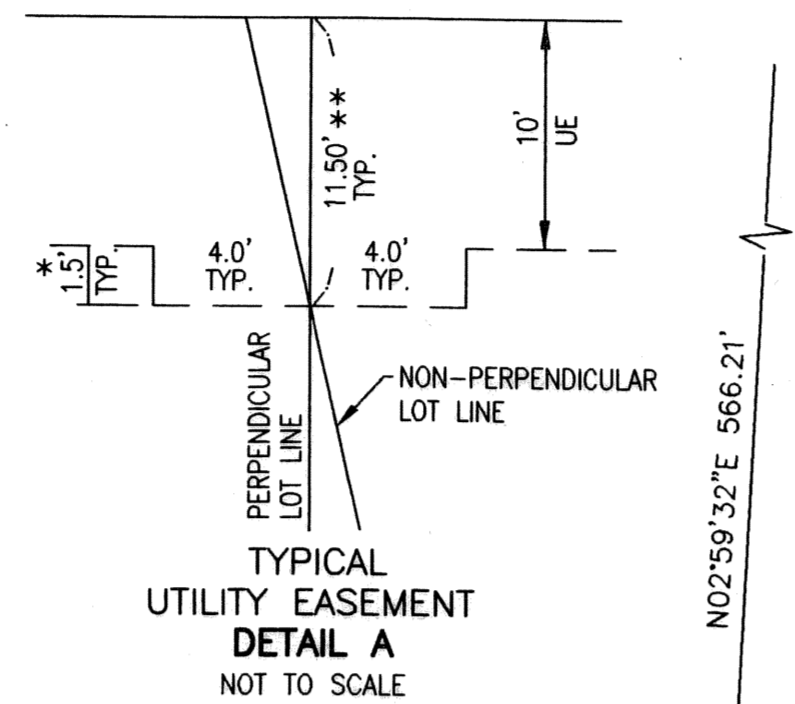
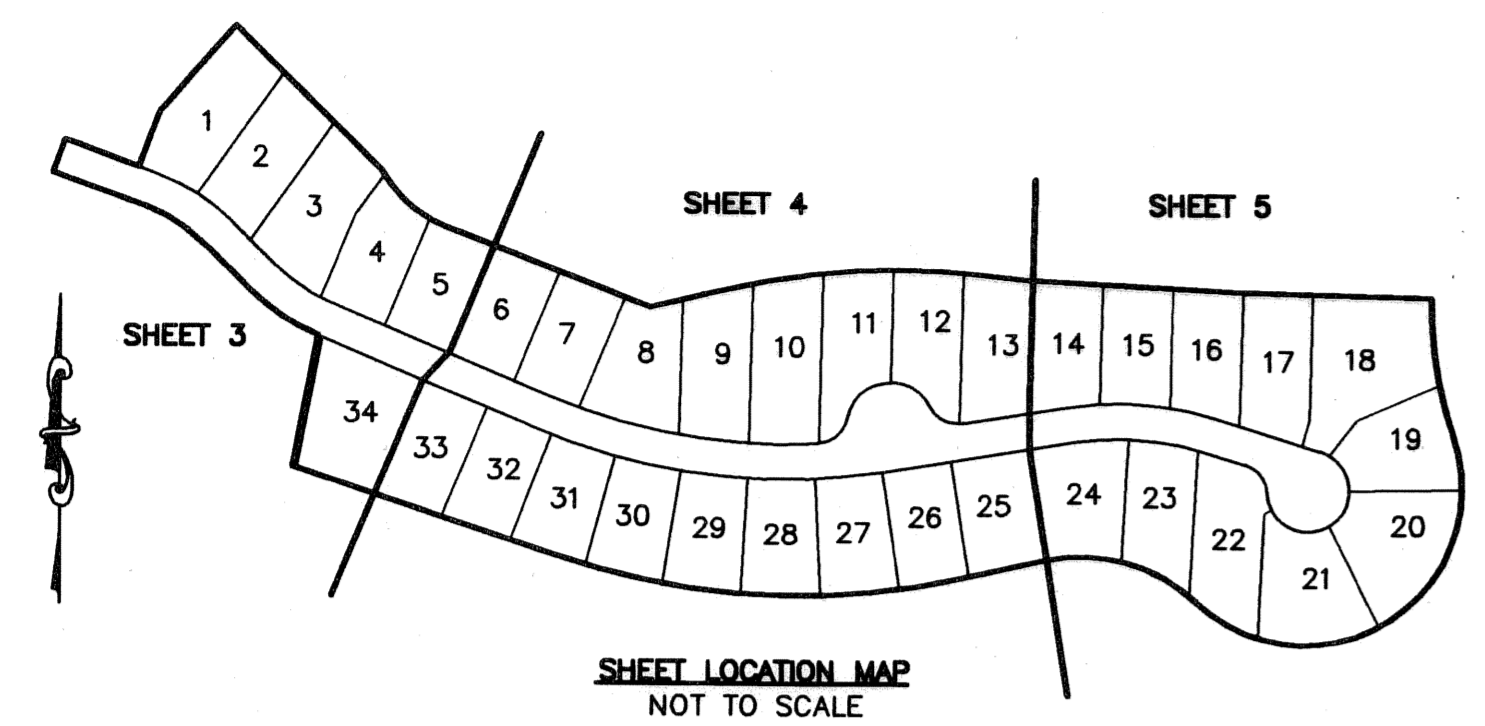
SHARON R. BOCK,
 CLERK & COMPTROLLER
 BY: *[Signature]*



CIRCUIT COURT SEAL

MIRASOL PARCEL TEN

BEING A REPLAT OF TRACT 10, MIRASOL PLAT SIX, AS RECORDED IN
 PLAT BOOK 104, PAGES 89 THROUGH 109 OF THE PUBLIC RECORDS
 OF PALM BEACH COUNTY, FLORIDA
 PART OF MIRASOL P.C.D.
 BEING IN SECTION 04, TOWNSHIP 42 SOUTH, RANGE 42 EAST,
 CITY OF PALM BEACH GARDENS,
 PALM BEACH COUNTY, FLORIDA
 SHEET 4 OF 5



- LEGEND
- Δ CENTRAL (DELTA) ANGLE
 - CH CHORD
 - DE DRAINAGE EASEMENT
 - IEE INGRESS-EGRESS EASEMENT
 - L ARC LENGTH
 - NPBCID NORTHERN PALM BEACH COUNTY IMPROVEMENT DISTRICT
 - ORB OFFICIAL RECORD BOOK
 - PAE PEDESTRIAN ACCESS EASEMENT
 - PG(S) PAGE(S)
 - PCD PLANNED COMMUNITY DEVELOPMENT
 - R RADIUS
 - UE UTILITY EASEMENT
 - PERMANENT REFERENCE MONUMENT
 - FOUND LB 048 (4" x 4" CONCRETE)
 - PERMANENT REFERENCE MONUMENT
 - SET LB 048 (4" x 4" CONCRETE)
 - PERMANENT CONTROL POINT
 - SET LB 048
 - CENTERLINE
 - WLE WATERLINE EASEMENT
 - WMME WATER MANAGEMENT MAINTENANCE EASEMENT

THIS INSTRUMENT WAS PREPARED BY MANUEL A. GUTIERREZ, P.S.M. IN
 THE OFFICES OF MOCK, ROOS & ASSOCIATES, INC., 5720 CORPORATE WAY,
 WEST PALM BEACH, FLORIDA 33407.

SCALE:
 1" = 40'

P.A. NO.:
 99363.03

DATE:
 MARCH, 2005

DRAWING NO.:
 42-42-04-114

FLORIDA L.B. NO. 48

MOCK • ROOS
 ENGINEERS • SURVEYORS • PLANNERS

5720 Corporate Way, West Palm Beach, Florida 33407
 (561) 683-3113, Fax 478-7248

SHEET 4 OF 5

MIRASOL PARCEL TEN
 BEING A REPLAT OF TRACT 10,
 MIRASOL PLAT SIX,
 PLAT BOOK 104, PAGES 89 THROUGH 109
 PART OF MIRASOL P.C.D.
 BEING IN SECTION 04,
 TOWNSHIP 42 SOUTH, RANGE 42 EAST,
 CITY OF PALM BEACH GARDENS,
 PALM BEACH COUNTY, FLORIDA

S:\New\104\pa10\pa10rpo2.dwg 9/19/2005 8:18:02 AM EDT

REVISED 08-03-05
 CAD FILE:
 TAYLPA10\PA10RPO2